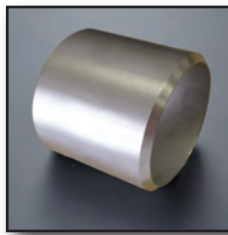


Reducer

Alloys	T304 & T316 Stainless Steel, Carbon Steel
Size Range	1.5" - 6"
Sch.	10 & 40 (Carbon Steel)



Beveled Pipe End

Alloys	T304 & T316 Stainless Steel, Carbon Steel, and Aluminum
Size Range	1.5" - 8"
Sch.	Various



NPSM Female or Male

Alloys	T304 Stainless Steel, Carbon Steel
Size Range	1.5" - 6"
Class	N/A



Compensator

Alloys	Urethane
Size Range	3" - 6"
Class	N/A

FLOW-TITE FITTINGS

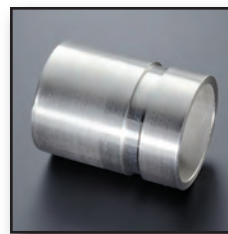
Flow-Tite is an interlocked metal hose assembly that features a patented fitting system designed for leak resistance and smooth product flow. The fittings are internally expanded to provide an extremely smooth transition from the hose to the fitting and incorporate an internal silicone sealant for leak-free, positive pressure, or vacuum service (*refer to page 13 for fabrication description*).

Flow-Tite has a weld-free design that ensures smooth flow while minimizing leakage. Because of their ability to handle higher temperatures (up to 400° F) Flow-Tite assemblies can replace polyurethane and UHMW products. Flow-Tite is available in Ultraflex smoothbore or Interflex roughbore constructions.



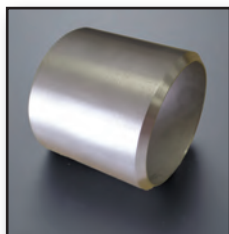
Male Pipe Nipple

Alloys	T304 & T316 Stainless Steel, Carbon Steel, and Aluminum
Size Range	4" - 6"
Sch.	40



Grooved-End

Alloys	T304 & T316 Stainless Steel, Carbon Steel
Size Range	4" - 6"
Sch.	40



Weld End

Alloys	T304 & T316 Stainless Steel, Carbon Steel, and Aluminum
Size Range	4" - 6"
Sch.	40