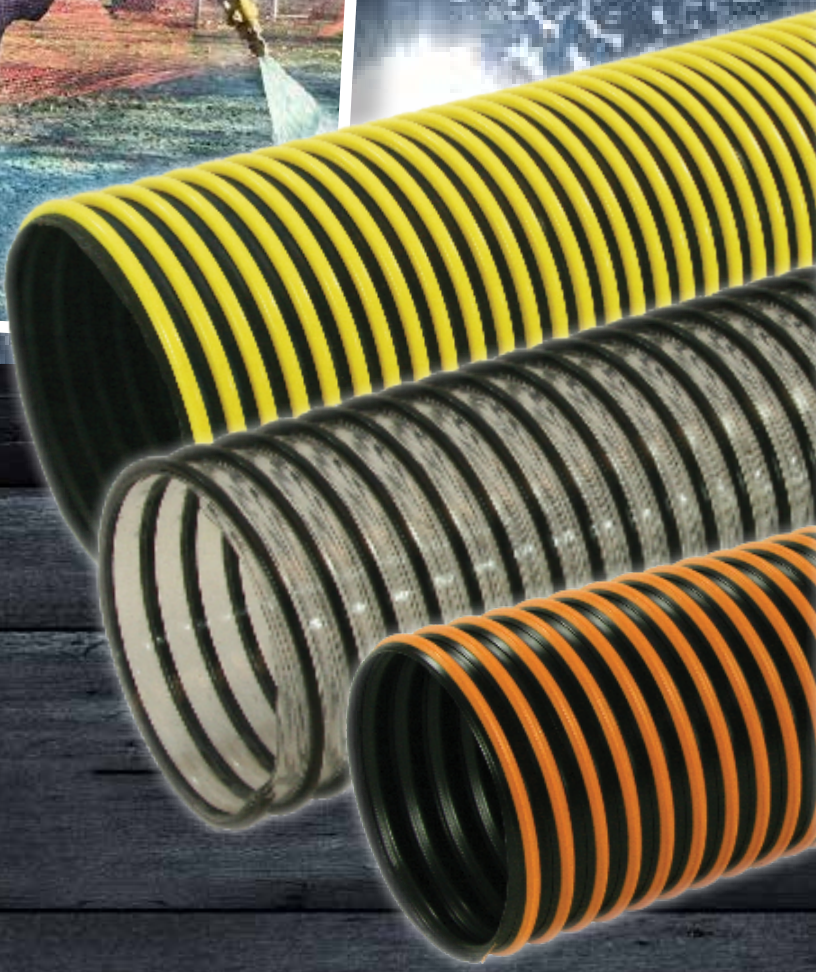
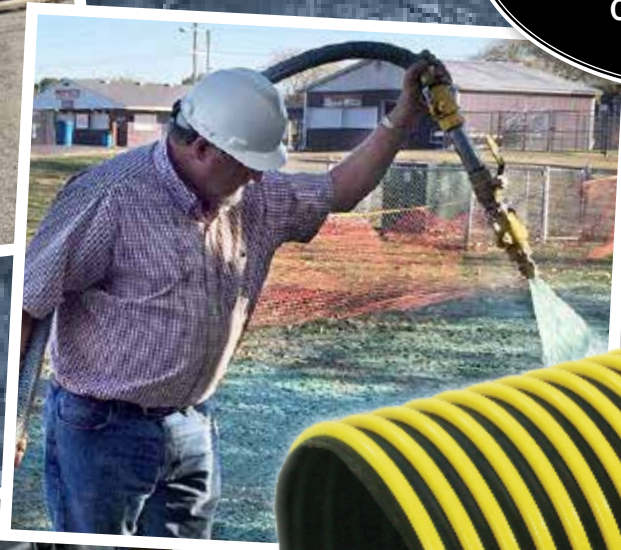


CATALOG VH

— VISIT OUR WEBSITE —
VACUHOSE.COM
ONLINE STORE FOR LANDSCAPE SOLUTIONS
ORDER ONLINE



ABBOTT RUBBER COMPANY, INC.

HOSE & ACCESSORIES FOR LANDSCAPE SOLUTIONS

NET PRICE LIST - DECEMBER 2023

POLYPROPYLENE BLEND LEAF VACUUM HOSE

Service/Application:

Medium weight high performance polypropylene blend flexible hose reinforced with a spring steel wire helix and polypropylene wearstrip. Good UV, abrasion and tear resistance. Minimally rigid tube assures for minimal friction loss and efficient airflow. Orange polypropylene wearstrip provides external abrasion and drag resistance.

Temperature Range:

-30°F up to +200°F

Flexibility Score:

Very Flexible



FLEXAUST: FLEXADUX LCDC

SIZE	LENGTH	PART #	PRICE EA
6"	10 FT	1874-6000-10	\$ 75.00
8"	10 FT	1874-8000-10	\$ 87.00
10"	10 FT	1874-10000-10	\$ 112.00
12"	10 FT	1874-12000-10	\$ 134.00

SIZE	LENGTH	PART #	PRICE EA
6"	25 FT	1874-6000-25	\$ 166.00
8"	25 FT	1874-8000-25	\$ 217.00
10"	25 FT	1874-10000-25	\$ 280.00
12"	25 FT	1874-12000-25	\$ 335.00

THERMOPLASTIC RUBBER LEAF VACUUM HOSE

Service/Application:

Medium weight black thermoplastic rubber flexible hose reinforced with a spring steel wire helix and external polypropylene wearstrip. Great UV, moisture, abrasion and tear resistance. Yellow polypropylene wearstrip provides external abrasion and drag resistance.

Temperature Range:

-60°F up to +275°F

Flexibility Score:

Very Flexible



FLEXAUST: FLEXADUX T-7W

SIZE	LENGTH	PART #	PRICE EA
6"	10 FT	1873-6000-10	\$ 83.00
8"	10 FT	1873-8000-10	\$ 97.00
10"	10 FT	1873-10000-10	\$ 124.00
12"	10 FT	1873-12000-10	\$ 149.00
14"	10 FT	1873-14000-10	\$ 180.00
16"	10 FT	1873-16000-10	\$ 232.00
18"	10 FT	1873-18000-10	\$ 277.00

SIZE	LENGTH	PART #	PRICE EA
6"	25 FT	1873-6000-25	\$ 184.00
8"	25 FT	1873-8000-25	\$ 241.00
10"	25 FT	1873-10000-25	\$ 311.00
12"	25 FT	1873-12000-25	\$ 360.00
14"	25 FT	1873-14000-25	\$ 450.00
16"	25 FT	1873-16000-25	\$ 582.00
18"	25 FT	1873-18000-25	\$ 693.00

OEM STRENGTH PVC LEAF VACUUM HOSE

Service/Application:

Medium weight clear co-extruded PVC hose with a rigid black external PVC helix. Ultra smooth interior prevents clogging at bends, while external helix acts as wearstrip. Very flexible crush resistant design.

Temperature Range:

20°F up to +160°F

Flexibility Score:

Very Flexible



FLEXAUST: FLEXTUBE PV

SIZE	LENGTH	PART #	PRICE EA
4"	12 FT	1850PV-4000-12	\$ 54.65
5"	12 FT	1850PV-5000-12	\$ 64.67
6"	12 FT	1850PV-6000-12	\$ 86.41
7"	12 FT	1850PV-7000-12	\$ 103.84
8"	12 FT	1850PV-8000-12	\$ 128.45
10"	12 FT	1850PV-10000-12	\$ 162.85
12"	12 FT	1850PV-12000-12	\$ 200.18

SIZE	LENGTH	PART #	PRICE EA
4"	25 FT	1850PV-4000-25	\$ 112.92
5"	25 FT	1850PV-5000-25	\$ 147.83
6"	25 FT	1850PV-6000-25	\$ 180.02
7"	25 FT	1850PV-7000-25	\$ 216.35
8"	25 FT	1850PV-8000-25	\$ 267.59
10"	25 FT	1850PV-10000-25	\$ 338.77
12"	25 FT	1850PV-12000-25	\$ 417.82

POLYURETHANE LEAF VACUUM HOSE

Service/Application:

Medium weight co-extruded thermoplastic ether based polyurethane hose with rigid ABS helix. Designed for ducting and blower applications of medium weight abrasives. Leaf collection, mulch blowing, dust and sawdust collection. Rigid ABS helix for easy drag, Ultra smooth interior prevents clogging at bends. Crush resistant design.

Temperature Range:

-40°F up to +200°F

Flexibility Score:

Semi-Flexible



FLEXAUST: FLEXTUBE PU

SIZE	LENGTH	PART #	PRICE EA
4"	12 FT	1856-4000-12	\$ 110.00
5"	12 FT	1856-5000-12	\$ 191.00
6"	12 FT	1856-6000-12	\$ 182.00
7"	12 FT	1856-7000-12	\$ 229.00
8"	12 FT	1856-8000-12	\$ 228.00

SIZE	LENGTH	PART #	PRICE EA
4"	25 FT	1856-4000-25	\$ 230.00
5"	25 FT	1856-5000-25	\$ 368.00
6"	25 FT	1856-6000-25	\$ 357.00
7"	25 FT	1856-7000-25	\$ 420.00
8"	25 FT	1856-8000-25	\$ 462.00

MEDIUM-DUTY URETHANE LEAF VACUUM HOSE W/ WIRE

Service/Application:

Medium weight clear polyurethane hose reinforced with a bronze coated steel wire helix. Abrasion and tear resistance, remaining flexible in low temperatures. UV resistant. Also available in black color upon request. Wall Thickness .030"

Temperature Range:

-65°F up to +200°F

Flexibility Score:

Very Flexible



FLEXAUST: FLX-THANE MD

SIZE	LENGTH	PART #	PRICE EA
4"	12 FT	1870-4000-12	\$ 131.50
5"	12 FT	1870-5000-12	\$ 152.00
6"	12 FT	1870-6000-12	\$ 157.50
7"	12 FT	1870-7000-12	\$ 194.25
8"	12 FT	1870-8000-12	\$ 199.50
10"	12 FT	1870-10000-12	\$ 280.62
12"	12 FT	1870-12000-12	\$ 310.50

SIZE	LENGTH	PART #	PRICE EA
4"	25 FT	1870-4000-25	\$ 263.00
5"	25 FT	1870-5000-25	\$ 304.25
6"	25 FT	1870-6000-25	\$ 315.00
7"	25 FT	1870-7000-25	\$ 388.50
8"	25 FT	1870-8000-25	\$ 399.00
10"	25 FT	1870-10000-25	\$ 561.25
12"	25 FT	1870-12000-25	\$ 621.00

MEDIUM-DUTY RUBBER STRAW VAC/BLOWER HOSE

Service/Application:

Medium duty flexible, black EPDM rubber duct hose designed for grass, leaf and dust collection, street refuse, grain dust, wood chips and straw blowing. Smooth interior and corrugated O.D. with a polypropylene outer helix for abrasion resistance & easy drag.

Temperature Range:

-40°F up to +158°F

Flexibility Score:

Flexible



KANAFLEX: 630ED

SIZE	LENGTH	PART #	PRICE EA
4"	25 FT	1867-4000-25	\$ 206.00
6"	25 FT	1867-6000-25	\$ 290.00
8"	25 FT	1867-8000-25	\$ 412.50

SIZE	LENGTH	PART #	PRICE EA
4"	50 FT	1867-4000-50	\$ 412.00
6"	50 FT	1867-6000-50	\$ 580.00
8"	50 FT	1867-8000-50	\$ 825.00

HEAVY-DUTY RUBBER VACUUM HOSE

Service/Application:

Heavy-duty Rubber duct hose used for duct cleaning, commercial & municipal leaf collection and blowing applications. EPDM Rubber tube with a Yellow polypropylene helix for easy drag. Smooth interior tube for unrestricted flow.

Temperature Range:

-40°F up to +158°F

Flexibility Score:

Semi-Flexible



KANAFLEX: 660YD

SIZE	LENGTH	PART #	PRICE EA
4"	25 FT	1868-4000-25	\$ 205.00
5"	25 FT	1868-5000-25	\$ 280.00
6"	25 FT	1868-6000-25	\$ 320.00
8"	25 FT	1868-8000-25	\$ 462.50
10"	25 FT	1868-10000-25	\$ 565.00
12"	25 FT	1868-12000-25	\$ 762.50

SIZE	LENGTH	PART #	PRICE EA
4"	50 FT	1868-4000-50	\$ 410.00
5"	50 FT	1868-5000-50	\$ 560.00
6"	50 FT	1868-6000-50	\$ 640.00
8"	50 FT	1868-8000-50	\$ 925.00
10"	50 FT	1868-10000-50	\$ 1130.00

HEAVY-DUTY URETHANE LEAF VACUUM HOSE W/ WIRE

Service/Application:

Heavy weight clear polyurethane hose reinforced with a bronze coated steel wire helix. Abrasion and tear resistance, remaining flexible in low temperatures. UV resistant. Also available in black color upon request. Wall Thickness .045"

Temperature Range:

-65°F up to +200°F

Flexibility Score:

Flexible



FLEXAUST: FLX-THANE HD

SIZE	LENGTH	PART #	PRICE EA
10"	10 FT	1870-10000-10-HD	\$ 278.00
12"	10 FT	1870-12000-10-HD	\$ 315.00
14"	10 FT	1870-14000-10-HD	\$ 392.00
16"	10 FT	1870-16000-10-HD	\$ 470.00
18"	10 FT	1870-18000-10-HD	\$ 605.00

SIZE	LENGTH	PART #	PRICE EA
10"	25 FT	1870-10000-25-HD	\$ 750.00
12"	25 FT	1870-12000-25-HD	\$ 788.00
14"	25 FT	1870-14000-25-HD	\$ 996.00
16"	25 FT	1870-16000-25-HD	\$ 1529.00
18"	25 FT	1870-18000-25-HD	\$ 1510.00

RUBBER GRASS & LEAF BLOWER HOSE

Service/Application:

General purpose rubber duct and blower hose. Designed for light-weight abrasives such as sawdust, grass clippings and street refuse. Steel wire helix. Smooth interior and slightly corrugated cover. Also available with wearstrip ideal for light dragging.

Temperature Range:

-40°F up to +220°F

Flexibility Score:

Very Flexible



KANAFLEX: 620WD

SIZE	LENGTH	PART #	PRICE EA
4"	10 FT	1860-4000-10	\$ 57.00
5"	10 FT	1860-5000-10	\$ 77.30
6"	10 FT	1860-6000-10	\$ 92.60
7"	10 FT	1860-7000-10	\$ 120.40
8"	10 FT	1860-8000-10	\$ 120.80
10"	10 FT	1860-10000-10	\$ 168.50
12"	10 FT	1860-12000-10	\$ 200.00

SIZE	LENGTH	PART #	PRICE EA
4"	12 FT	1860-4000-25	\$ 142.50
5"	12 FT	1860-5000-25	\$ 193.25
6"	12 FT	1860-6000-25	\$ 231.50
7"	12 FT	1860-7000-25	\$ 301.00
8"	12 FT	1860-8000-25	\$ 302.00
10"	12 FT	1860-10000-25	\$ 421.24
12"	12 FT	1860-12000-25	\$ 505.00

LEAF VACUUM HOSE CONNECTORS & REDUCERS



HOSE CONNECTORS

2500C

PART #	PRICE EA
2500C-400	\$ 14.70
2500C-500	\$ 15.30
2500C-600	\$ 16.60
2500C-700	\$ 17.10
2500C-800	\$ 17.50
2500C-1000	\$ 21.80
2500C-1200	\$ 28.10



J-LOCK HOSE CONNECTORS

2500J

PART #	PRICE EA
2500J-400	\$ 41.90
2500J-500	\$ 32.40
2500J-600	\$ 31.50
2500J-800	\$ 34.30
2500J-1000	\$ 36.10
2500J-1200	\$ 38.60



ALUMINUM REDUCERS

2500R

SIZE	PRICE EA	PART #	PRICE EA
6 X 4"	\$ 55.25	14 X 10"	\$ 93.75
7 X 4"	\$ 55.25	14 X 12"	\$ 93.75
8 X 4"	\$ 60.00	16 X 10"	\$ 101.25
12 X 6"	\$ 72.80	16 X 12"	\$ 101.25
10 X 8"	\$ 63.87	16 X 14"	\$ 101.25
12 X 8"	\$ 72.80	18 X 12"	\$ 125.50
12 X 10"	\$ 72.80	18 X 14"	\$ 125.50

200 PSI BLACK RUBBER HYDROSEEDING HOSE

Service/Application:

Heavy duty, flexible rubber hose. Used for Hydro-Seeding and wash-down service. Black, EPDM, age resistant rubber tube & cover reinforced with 2 braid equivalent spiral reinforcement. Abrasion and weather resistant black EPDM rubber cover.

Temperature Range:

-20°F up to +190°F

Assembly Type:

Male x Male or Male x Female NPT Full-flow - internally expanded.



SIZE	LENGTH	PART #	PRICE EA
1"	50 FT	1011HS-1002-50-MM	\$ 201.20
1"	100 FT	1011HS-1002-100-MM	\$ 465.40
1"	150 FT	1011HS-1002-150-MM	\$ 691.40
1"	200 FT	1011HS-1002-200-MM	\$ 1013.60
1-1/4"	50 FT	1011HS-1252-50-MM	\$ 284.00
1-1/4"	100 FT	1011HS-1252-100-MM	\$ 501.20

SIZE	LENGTH	PART #	PRICE EA
1-1/4"	150 FT	1011HS-1252-150-MM	\$ 766.70
1-1/4"	200 FT	1011HS-1252-200-MM	\$ 1165.40
1-1/2"	50 FT	1011HS-1502-50-MM	\$ 412.30
1-1/2"	100 FT	1011HS-1502-100-MM	\$ 596.30
1-1/2"	150 FT	1011HS-1502-150-MM	\$ 895.10
1-1/2"	200 FT	1011HS-1502-200-MM	\$ 1313.60

CLEAR-BRAID PVC HYDROSEEDING HOSE

Service/Application:

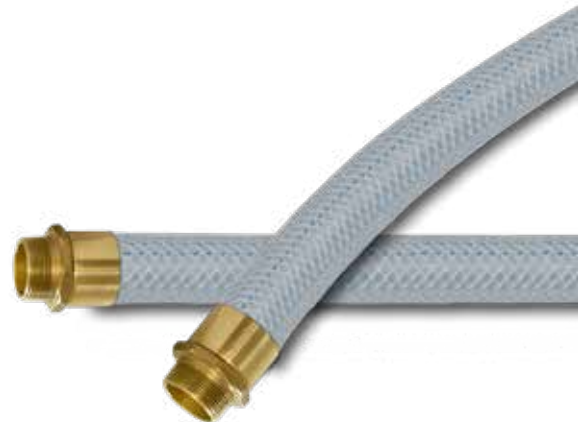
Clear lightweight and flexible hose. Used for Hydro-Seeding and wash-down service. Crystal clear construction allows visual confirmation of product. Reinforced with spiraled polyester yarn and longitudinal blue tracer yarns for a non-restricted flow.

Temperature Range:

25°F up to +150°F

Assembly Type:

Male x Male or Male x Female NPT Full-flow - internally expanded.



REGULAR WALL (100 PSI)

SIZE	LENGTH	PART #	PRICE EA
1"	50 FT	3020HS-1000-50-MM	\$ 130.00
1"	100 FT	3020HS-1000-100-MM	\$ 210.00
1-1/4"	50 FT	3020HS-1250-50-MM	\$ 289.00
1-1/4"	100 FT	3020HS-1250-100-MM	\$ 399.00
1-1/2"	50 FT	3020HS-1500-50-MM	\$ 299.00
1-1/2"	100 FT	3020HS-1500-100-MM	\$ 475.00

HEAVY WALL (125 PSI)

SIZE	LENGTHS	PART #	PRICE EA
1"	50 FT	3030HS-1000-50-MM	\$ 214.50
1"	100 FT	3030HS-1000-100-MM	\$ 377.50
1-1/4"	50 FT	3030HS-1250-50-MM	\$ 346.75
1-1/4"	100 FT	3030HS-1250-100-MM	\$ 624.50
1-1/2"	50 FT	3030HS-1500-50-MM	\$ 402.75
1-1/2"	100 FT	3030HS-1500-100-MM	\$ 724.00

PREMIUM RED 300 PSI HYDROSEEDING HOSE

Service/Application:

This Red Premium 300 PSI rubber Hydroseeding hose has the ingredients to outlast all the other hose options available. Featuring a highly Chemical, Oil and Abrasion Resistant Nitrile Tube along with a Durable Oil, Abrasion and Weather Resistant Cover.

Temperature Range:

-20°F up to +190°F

Assembly Type:

Male x Male or Male x Female NPT Full-flow - internally expanded.



SIZE	LENGTH	PART #	PRICE EA
1"	50 FT	1030HS-1002-50-MM	\$ 292.82
1"	100 FT	1030HS-1002-100-MM	\$ 523.22
1"	150 FT	1030HS-1002-150-MM	\$ 753.62
1"	200 FT	1030HS-1002-200-MM	\$ 984.02
1-1/4"	50 FT	1030HS-1252-50-MM	\$ 495.64
1-1/4"	100 FT	1030HS-1252-100-MM	\$ 913.81

SIZE	LENGTH	PART #	PRICE EA
1-1/4"	150 FT	1030HS-1252-150-MM	\$ 1331.97
1-1/4"	200 FT	1030HS-1252-200-MM	\$ 1750.13
1-1/2"	50 FT	1030HS-1502-50-MM	\$ 495.64
1-1/2"	100 FT	1030HS-1502-100-MM	\$ 913.81
1-1/2"	150 FT	1030HS-1502-150-MM	\$ 1331.97
1-1/2"	200 FT	1030HS-1502-200-MM	\$ 1750.13

LAY-FLAT PVC HYDROSEEDING HOSE



Service/Application:

A premium Goodyear branded collapsible hydroseeder hose assembly. Significantly lighter than the standard rubber hoses that comes with the OEM equipment.

Assembly Type:

Male x Female - Full-flow - internally expanded aluminum ends.

SIZE	LENGTH	PART #	PRICE EA
1-1/2"	25 FT	1152HS-1500-25-MF	\$ 150.00
1-1/2"	50 FT	1152HS-1500-50-MF	\$ 175.00
1-1/2"	100 FT	1152HS-1500-100-MF	\$ 233.00
1-1/2"	150 FT	1152HS-1500-150-MF	\$ 290.50
1-1/2"	200 FT	1152HS-1500-200-MF	\$ 348.00
1-1/2"	250 FT	1152HS-1500-250-MF	\$ 405.00
1-1/2"	300 FT	1152HS-1500-300-MF	\$ 462.00

PREMIUM LAY-FLAT HYDROSEEDING HOSE



Service/Application:

An exclusive Goodyear branded fire hose rated to 200 PSI. This hose comes with a double jacket reinforcement for greater service life and better abrasion resistance.

Assembly Type:

Male x Female - Full-flow - internally expanded aluminum ends

SIZE	LENGTH	PART #	PRICE EA
1-1/2"	25 FT	1132HS-1500-25-MF	\$ 126.45
1-1/2"	50 FT	1132HS-1500-50-MF	\$ 149.45
1-1/2"	100 FT	1132HS-1500-100-MF	\$ 195.45

LAY-FLAT HOSE IS LIGHTER WEIGHT & GREAT FOR JOBS THAT REQUIRE LONGER LENGTHS OF HOSE.

LIGHTWEIGHT SWIVEL SPRAY GUN



SIZE	FAN ANGLE	PART #	PRICE EA
1-1/4"	50°	HYSG-125-SW-50	\$ 230.00
1-1/4"	80°	HYSG-125-SW-80	\$ 230.00
1-1/2"	50°	HYSG-150-SW-50	\$ 245.00
1-1/2"	80°	HYSG-150-SW-80	\$ 245.00

LIGHTWEIGHT SPRAY GUN



SIZE	FAN ANGLE	PART #	PRICE EA
1-1/4"	50°	HYSG-125-QC-50	\$ 169.00
1-1/4"	80°	HYSG-125-QC-80	\$ 169.00
1-1/2"	50°	HYSG-150-QC-50	\$ 175.00
1-1/2"	80°	HYSG-150-QC-80	\$ 175.00

NOZZLE GUN SPRAY TIPS



BRASS VEEJET FLAT FAN SRAY TIPS

SIZE	DEGREE	PART #	PRICE EA
3/4"	50°	SN-50400	\$ 44.95
3/4"	80°	SN-50580	\$ 43.50
1"	50°	SN-80400	\$ 83.86
1"	80°	SN-80580	\$ 83.86



STRAIGHT-TIP SPRAY NOZZLE

SIZE	PART #	PRICE EA
3/4"	JSTN-075	\$ 10.25
1"	JSTN-100	\$ 14.75
1-1/4"	JSTN-125	\$ 21.00
1-1/2"	JSTN-150	\$ 21.00



NOZZLE GUN QUICK ATTACHMENT

SIZE	DEGREE	PART #	PRICE EA
1-1/4"	50°	QASN-125-50	\$ 83.00
1-1/4"	80°	QASN-125-50	\$ 83.00
1-1/2"	50°	QASN-150-50	\$ 90.00
1-1/2"	80°	QASN-150-50	\$ 90.00

VALVES & HOSE REELS



SINGLE UNION POLY VALVE

SIZE	PART #	PRICE EA
1-1/4"	SU125E	\$ 26.50
1-1/2"	SU150E	\$ 28.00

WE CUSTOMIZE HOSE REELS!

HYDROSEEDING HOSE REEL - HAND CRANK

HOSE ID	CAPACITY	PART #	PRICE EA
1"	100 FT	1175-6-100	\$ 584.00
1"	150 FT	1175-6-150	\$ 637.00
1"	200 FT	1175-6-200	\$ 637.00
1-1/4"	100 FT	1185-2024	\$ 693.00
1-1/4"	150 FT	1185-2528	\$ 832.00
1-1/4"	200 FT	1185-3328	\$ 832.00
1-1/2"	100 FT	1185-2024	\$ 693.00
1-1/2"	150 FT	1185-2528	\$ 832.00
1-1/2"	200 FT	1185-3328	\$ 832.00



FLEX-TUBE PU LIGHTWEIGHT MD MULCH HOSE

Service/Application:

Lightweight and very flexible medium-duty mulch hose made with for mulch blowing applications. Perfect hose option to be used furtheset away from the blower units. Hose is designed with a rigid ABS helix for easy dragging, while also featuring a polyurethane smooth bore. Full-flow Capable (LH Series)

SIZE	LENGTH	PART #	PRICE EA	+ FULL-FLOW
4"	50 FT	1856-4000-50	\$ 500.00	+ \$ 217.10
4"	100 FT	1856-4000-100	\$ 885.00	+ \$ 217.10
5"	50 FT	1856-5000-50	\$ 705.68	+ \$ 362.50
5"	100 FT	1856-5000-100	\$ 1316.83	+ \$ 362.50

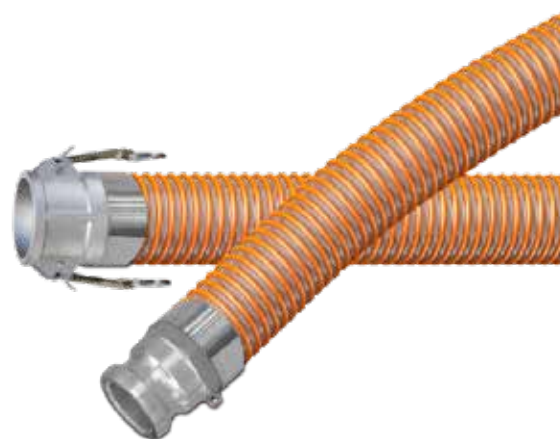


ORANGUTAN PU LIGHTWEIGHT HD MULCH HOSE

Service/Application:

Lightweight flexible Heavy-duty and durable mulch hose designed by Mulch Blower Professionals. The Popular lightweight polyurethane design is desirable for decreased worker fatigue and an easy-drag external helix for dragging on concrete or asphalt with little resistance. Full-flow Capable (LH Series)

SIZE	LENGTH	PART #	PRICE EA	+ FULL-FLOW
4"	50 FT	ORANGUTAN-400-50	\$ 588.17	+ \$ 217.10
4"	100 FT	ORANGUTAN-400-100	\$ 1176.88	+ \$ 217.10
5"	50 FT	ORANGUTAN-500-50	\$ 686.44	+ \$ 362.50
5"	100 FT	ORANGUTAN-500-100	\$ 1372.87	+ \$ 362.50

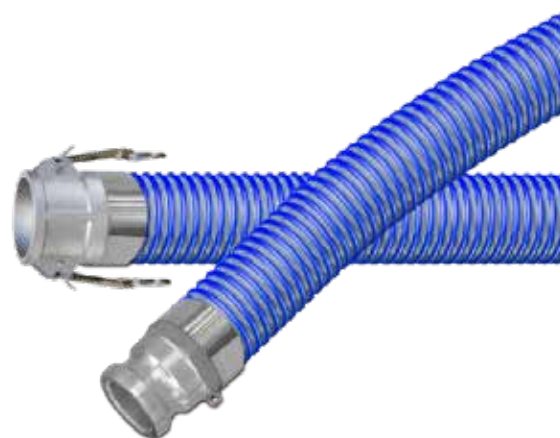


YETEE PU LIGHTWEIGHT EXTRA HD MULCH HOSE

Service/Application:

Lightweight flexible polyurethane hose designed with an Ultra Strong Abrasion and Heat resistant tube. Perfect for hose to be hooked up directly off the blower, where temperatures may exceed 150° degrees. PU design is desirable for those looking for decreased worker fatigue and an easy-drag external helix for dragging on concrete or asphalt with little resistance. Full-flow Capable (LH Series)

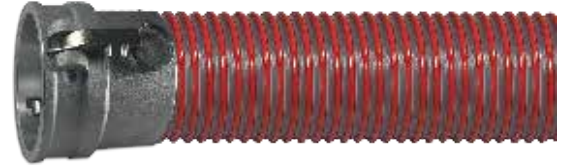
SIZE	LENGTH	PART #	PRICE EA	+ FULL-FLOW
4"	50 FT	ORANGUTAN-400-50	\$ 849.50	+ \$ 217.10
4"	100 FT	ORANGUTAN-400-100	\$ 1699.00	+ \$ 217.10
5"	50 FT	ORANGUTAN-500-50	\$ 1099.50	+ \$ 362.50
5"	100 FT	ORANGUTAN-500-100	\$ 2199.00	+ \$ 362.50



OEM STRENGTH PVC BARK BLOWER HOSE

Service/Application:

High-strength, Heavy Weight bark-blowing hose that is rigid and durable. It provides visibility through the clear PVC tube allowing users to see material flow. Constructed with a clear, high-strength and abrasion resistant PVC compound. Dark Red Color. Most similar to OEM hose that comes standard with the blower trucks. Full-flow Capable (RH Series)



SIZE	LENGTH	PART #	PRICE EA	+ FULL-FLOW
4"	100 FT	1875GY-4000	\$ 950.00	+ \$ 192.00
5"	100 FT	1875R-4000	\$ 1241.00	+ \$ 229.00

MEDIUM STRENGTH PVC MULCH HOSE

Service/Application:

Medium Strength PVC & Medium Weight Mulch Blower Hose that's both flexible and semi-durable. This hose can be used to spray mulch, wood-chips and other materials for landscaping applications in a wide range of environments. This hose is similar to the OEM hose of smaller units. Full-flow Capable (RH Series)



SIZE	LENGTH	PART #	PRICE EA	+ FULL-FLOW
4"	100 FT	1875BLK-4000	\$ 826.00	+ \$ 192.00

HIGH STRENGTH PVC MULCH HOSE

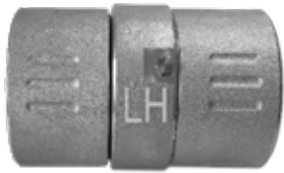
Service/Application:

High Strength Medium Weight Mulch Blower Hose that's flexible and durable. It provides visible, unrestricted material applications in a buildup and hose balance. This hose can be used to spray mulch, wood-chips and other materials for landscaping applications in a wide range of environments. Full-flow Capable (RH Series)



SIZE	LENGTH	PART #	PRICE EA	+ FULL-FLOW
4"	100 FT	1875-4000	\$ 998.90	+ \$ 192.00

FULL-FLOW FITTINGS FOR PU SERIES (LEFT-HAND HELIX)



GEN 2 (LH) SWIVEL CONNECTOR

SIZE	PART #	PRICE EA
4"	FFM-LF-400	\$ 233.00
5"	FFM-LF-500	\$ 275.00



GEN 2 (LH) MALE CONNECTOR

SIZE	PART #	PRICE EA
4"	FFMM-LF-400	\$ 78.00
5"	FFMM-LF-500	\$ 90.50



GEN 2 (LH) FEMALE CONNECTOR

SIZE	PART #	PRICE EA
4"	FFMS-LF-400	\$ 155.00
5"	FFMS-LF-500	\$ 184.50



PART 'A' MALE ADAPTER

SIZE	PART #	PRICE EA
4"	AL-MHA400	\$ 32.25
5"	QA-500-DC	\$ 32.50



PART 'D' FEMALE COUPLER

SIZE	PART #	PRICE EA
4"	AL-MHD400	\$ 45.15
5"	QD-500-DC	\$ 90.50



GEN 2 (LH) FEMALE CONNECTOR

SIZE	PART #	PRICE EA
5"	QB-500-DC	\$ 55.50

FULL-FLOW FITTINGS FOR OEM SERIES (RIGHT-HAND HELIX)



GEN 2 (RH) SWIVEL CONNECTOR

SIZE	PART #	PRICE EA
4"	FFM-RH-400	\$ 250.00



GEN 2 (RH) MALE CONNECTOR

SIZE	PART #	PRICE EA
4"	FFMM-RH-400	\$ 98.00



GEN 2 (RH) FEMALE CONNECTOR

SIZE	PART #	PRICE EA
4"	FFMS-RH-400	\$ 158.00



FULL-FLOW FEMALE PART 'C'

SIZE	PART #	PRICE EA
4"	MQC-400-DC	\$ 105.00
5"	MQC-500-DC	\$ 125.50



FULL-FLOW MALE PART 'E'

SIZE	PART #	PRICE EA
4"	MQE-500-DC	\$ 87.00
5"	MQE-500-DC	\$ 103.50



GEN 2 REBUILD KITS

SIZE	PART #	PRICE EA
4"	60134014	\$ 17.50
5"	60135017	\$ 19.95

HOT AIR BLOWER HOSE (OFF TRUCK)

PRESERVE YOUR HOSES WITH OUR
HOT AIR BLOWER HOSE

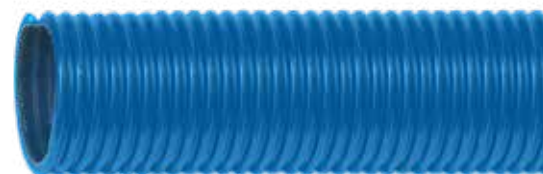
FOR USE DIRECTLY OFF BLOWER TRUCK

SIZE	PART #	PRICE FT	+ FITTINGS
4"	1740-4000	\$ 26.12	+\$ 154.50

EXTRA HEAVY DUTY BLUE URETHANE MATERIAL HOSE

Service/Application:

Extremely heavy duty polyurethane material handling hose ideal for dry applications where high abrasion resistance is required. static dissipative tube also provides flexibility in sub-zero temperatures.



SIZE	LENGTH	PART #	PRICE FT
4"	100 FT	URE-HD-400-100	\$ 19.99
5"	100 FT	URE-HD-500-100	\$ 30.36

EXTRA HEAVY DUTY RUBBER MATERIAL HOSE

Service/Application:

Extremely heavy duty polyurethane material handling hose ideal for dry applications where high abrasion resistance is required. static dissipative tube also provides flexibility in sub-zero temperatures.



SIZE	LENGTH	PART #	PRICE FT
4"	100 FT	1652-4000	\$ 28.09
5"	100 FT	1652-5000	\$ 33.06

FITTING RECOMMENDATIONS:



CHAINLOCK HOSE CONNECTOR

SIZE	PART #	PRICE/SET
4"	CLHE-400	\$ 235.84
5"	CLHE-500	\$ 349.50



CENTER PUNCH TOOL

PART #	PRICE EA
BCP-P1000I	\$ 108.00

MULCH TRUCK CONNECTION PARTS



5 X 4 REDUCER X NPT ADAPTER

PART #	PRICE EA
EBRP-5040-RL-NPT-A	\$ 179.00



5 X 4 REDUCER X CHAINLOCK

PART #	PRICE EA
EBRP-5040-RL	\$ 179.00



RINGLOCK CLAMP

PART #	PRICE EA
3011404-0004	\$ 19.90
3011404-0005	\$ 23.70



CHAINLOCK GASKET

PART #	PRICE EA
9090330-0004	\$ 11.00
9090330-0005	\$ 11.00



AIRLOCK PRESSURE GAUGE - CAP

PART #	PRICE EA
AL400PG-DC-15PS	\$ 65.00
AL400PG-DC-30PSI	\$ 65.00



CENTER PUNCH TOOL CLAMPS

SIZE	PART #	PRICE EA
4"	BCP-18	\$ 2.25
5"	BCP-26	\$ 3.10

MULCH HOSE CONNECTORS



**MAGIC MULCH DIFFUSER
W/ FULL-FLOW SWIVEL**

PART #	PRICE EA
EBN-400-LH	\$ 399.00



REPLACEMENT QUICK COUPLINGS

SIZE	PART #	PRICE/SET
4"	QCQE-400	\$ 52.48
5"	QCQE-500	\$ 102.25



REPLACEMENT GASKETS

SIZE	PART #	PRICE EA
4"	QRG-400	\$ 2.26
5"	QRG-500	\$ 2.35

**LOOKING FOR SOMETHING YOU DONT SEE?
LET US KNOW! WE MIGHT HAVE JUST WHAT YOU'RE LOOKING FOR.**



PVC AG SPRAY HOSE (600 PSI)

Service/Application:

Excellent quality spray hoses made with premium quality PVC compounds, ideally-suited for lawn and ornamental spray applications using wettable powder chemicals. Great for Lawn & pest control spraying.



SIZE	LENGTH	PART #	PRICE EA	+ MXM STEEL	+ MXM S/S
3/8"	300 FT	K4132-06X300	\$ 280.00	+\$ 12.00	+\$ 20.00
3/8"	400 FT	K4132-06X400	\$ 378.00	+\$ 12.00	+\$ 20.00
1/2"	300 FT	K4132-08X300	\$ 395.00	+\$ 12.00	+\$ 20.00
1/2"	400 FT	K4132-08X400	\$ 528.00	+\$ 12.00	+\$ 20.00

PVC/URETHANE BLENDED AG SPRAY HOSE (600 PSI)

Service/Application:

Premium PVC/Polyurethane blended core provides excellent resistance to hydrocarbon-based lawn care and pest control chemicals. Reinforced with high tensile strength yarn. PVC ribbed cover provides abrasion resistance.



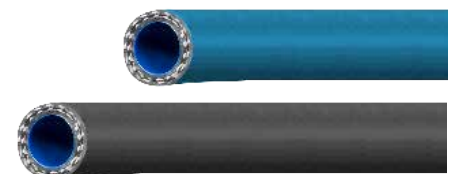
SIZE	LENGTH	PART #	PRICE EA	+ MXM STEEL	+ MXM S/S
3/8"	300 FT	2036-0375-300	\$ 399.00	+\$ 12.00	+\$ 20.00
3/8"	400 FT	2036-0375-400	\$ 532.00	+\$ 12.00	+\$ 20.00
1/2"	300 FT	2036-0500-300	\$ 525.00	+\$ 12.00	+\$ 20.00
1/2"	400 FT	2036-0500-400	\$ 700.00	+\$ 12.00	+\$ 20.00
3/4"	300 FT	2036-0750-300	\$999.95	+\$ 16.00	+\$ 25.00

LLDPE BLENDED PREMIUM AG SPRAY HOSE (800 PSI)

Service/Application:

Premium high pressure polyethylene blend ag spray hose, for applications requiring greater chemical resistance. Perfect for tree & orchard spraying

SIZE	LENGTH	PART #	PRICE EA	+ MXM STEEL	+ MXM S/S
3/8"	100 FT	A4083-06X100	\$ 280.00	+\$ 12.00	+\$ 20.00
1/2"	100 FT	A4083-08X100	\$ 378.00	+\$ 12.00	+\$ 20.00
3/4"	100 FT	A4083-12X100	\$ 395.00	+\$ 16.00	+\$ 25.00
1"	100 FT	A4083-16X100	\$ 528.00	+\$ 20.00	+\$ 30.00



**'We Sell
The Good**

Why buy anything else?

**ABBOTT RUBBER
COMPANY, INC.**

1311 MEACHAM RD. • ITASCA, IL 60143 • 800.852.1855
E-MAIL sales@abbottrubber.com • MAIN WEBSITE www.abbottrubber.com

 **VACUHOSE**.COM
ONLINE STORE FOR LANDSCAPE SOLUTIONS

