

Electrically conductive polyethylene hose, medium-heavy duty

## Application

- flexible hose/ ducting for gases and for dust, powder, fibers
- chemical industry: chemical vapors, vapor return hose at loading arm, paint steam, spray mist extraction
- explosion hazard area
- Coal mine, mine, tunnelling: ventilation, methane extraction

## Properties

- medium-heavy duty
- good resistance to alkalis and acids
- extremely good resistance to chemicals

- extremely good resistance to chemicals
- electrically conductive wall: electrical and surface resistance  $<10^3 \Omega$  (according to NFPA 652  $<10^6 \Omega$ )
- in accordance with ATEX 2014/34/EU (1999/92/EC) and German TRGS 727: pneumatic transport of flammable dusts and bulk materials (Zone 20, 21, 22 inside), aspiration of combustible dusts (Zone 22 inside),
- in accordance with ATEX 2014/34/EU (1999/92/EC) and German TRGS 727: for conveying for flammable liquids (inside zone 0, 1, 2), for conveying for non-flammable liquids, for use in zone 1 and 2 (gases), for use in zone 0 (gases)
- conforms to RoHS guideline
- REACH according to --> Technology / Technical Information / REACH

## Temperature range

- 30 °F to 175 °F

## Design

- AIRDUC® profile hose
- spring steel wire firmly embedded in wall
- wall: electrically conductive polyethylene (PE)
- wall thickness 0.03 in approx.

## Delivery variants

- further diameters and lengths available on request
- black (standard)
- customer-specific branding

I.D.	outer Ø	Pressure	Vacuum	Bending radius	Weight	Dimensions in Stock	Order No.
(in / mm)	(in)	(psi)	(inHG)	(in)	(lb/ft)	(ft)	
1,25 / 32	1.535	11.313	15.651	0.906	0.148	10	362-0032-1003
1,5 / 38	1.772	9.573	13.289	1.024	0.175	10	362-0038-1003
- / 40	1.850	9.138	12.550	1.063	0.181	10	362-0040-1003
2 / 50-51	2.244	7.325	10.040	1.260	0.222	10	362-0050-1003
2,36 / 60	2.638	6.164	8.711	1.457	0.269	10	362-0060-1003
- / 70	3.110	5.294	6.201	1.732	0.309	10	362-0070-1003
- / 80	3.504	4.641	5.463	1.929	0.349	10	362-0080-1003
3,5 / 89-90	3.898	4.134	4.872	2.126	0.397	10	362-0090-1003
4 / 100-102	4.291	3.699	4.282	2.323	0.511	10	362-0100-1003
5 / 125-127	5.276	2.973	3.544	2.835	0.632	10	362-0125-1003
5,5 / 140	5.866	2.683	3.101	3.110	0.712	10	362-0140-1003
6 / 150-152	6.260	2.466	2.953	3.307	0.759	10	362-0150-1003
6,3 / 160	6.654	2.321	2.658	3.504	0.813	10	362-0160-1003
8 / 200-203	8.268	1.886	2.215	4.331	1.015	10	362-0200-1003
- / 250	10.236	1.523	1.772	5.315	1.263	10	362-0250-1003
11 / 280	11.417	1.305	1.624	5.906	1.411	10	362-0280-1003
- / 300	12.205	1.233	1.477	6.299	1.519	10	362-0300-1003

Positive and negative pressure ratings are the recommended maximum operating values. Products can be manufactured to meet higher operating values upon request. The bend radius is calculated from the center of the hose in an arched position. Additional information at [www.norres.com/us/technology/](http://www.norres.com/us/technology/). NORRES reserves the right to modify technical data at any time. Technical data based on tests at 68 °F and are approx. values. Proper use and maintenance of NORRES hoses is the sole responsibility of purchaser and ultimate user of the product. The individual conditions, applications and the number of variables make firm recommendations technically impossible. This information is intended as a general guide only.

Positive and negative pressure ratings are the recommended maximum operating values. Products can be manufactured to meet higher operating values upon request. The bend radius is calculated from the center of the hose in an arched position. Additional information at [www.norres.com/us/technology/](http://www.norres.com/us/technology/). NORRES reserves the right to modify technical data at any time. Technical data based on tests at 68 °F and are approx. values. Proper use and maintenance of NORRES hoses is the sole responsibility of purchaser and ultimate user of the product. The individual conditions, applications and the number of variables make firm recommendations technically impossible. This information is intended as a general guide only.

## Accessories



CLAMP 210 BRIDGE  
CLAMP



CONNECT 270-271



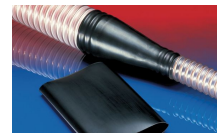
CLAMP 212 EC



CLAMP 217



CLAMP 213



CONNECT 223



CLAMP 212



CONNECT 228