

## Polyethylene food hose and pharmaceutical hose, medium-heavy duty

### Application

- flexible hose/ ducting for gases and for dust, powder, fibers
- food industry, pharmaceutical industry: food, pharmaceutical
- conveying of dry foods e.g. rice, cereals, sugar, milk powder, powders, coffee, tea, grains, flour, frozen foods
- mixer, dryer, packaging machine, bulk-bag (big bag)-charging and discharging, mill
- tobacco industry: cigarette machine, tobacco conveying
- galvanic extraction
- chemical industry: chemical vapors, vapor return hose at loading arm, paint steam, spray mist extraction
- medium-heavy duty
- Food grade wall, complies with: FDA 21 CFR 177.1520 3.1 and 3.2, FCN741, EU-Directive 10/2011 and EC 1935/2004
- odorless and tasteless
- good resistance to alkalis and acids
- extremely good resistance to chemicals
- manufacturing process acc. GMP EC 2023/2006
- conforms to RoHS guideline
- REACH according to --> Technology / Technical Information / REACH

### Temperature range

- 30°F to 175°F

- AIRDUC® profile hose
- spring steel wire firmly embedded in wall
- wall: special polyethylene (PE)
- wall thickness 0.03 in approx.

### Delivery variants

- further diameters and lengths available on request
- transparent (standard)
- special colors: full colored
- customer-specific branding

### Properties

- medium-heavy duty

I.D.	outer Ø	Pressure	Vacuum	Bending radius	Weight	Dimensions in Stock	Order No.
(in / mm)	(in)	(psi)	(inHG)	(in)	(lb/ft)	(ft)	
1 / 25	1.181	21.103	16.832	0.669	0.141	10 15	362-0025-0000
- / 28	1.339	19.943	15.946	0.787	0.168	10	362-0028-0000
- / 30	1.457	14.214	15.356	0.866	0.141	10	362-0030-0000
1,25 / 32	1.535	13.344	14.913	0.906	0.155	10	362-0032-0000
1,5 / 38	1.772	11.313	14.027	1.024	0.175	10	362-0038-0000
- / 40	1.850	10.733	13.584	1.063	0.188	10	362-0040-0000
1,75 / 44-45	2.047	9.573	12.698	1.181	0.208	10	362-0045-0000
2 / 50-51	2.244	8.630	11.664	1.260	0.228	10	362-0050-0000
- / 55	2.441	7.832	10.336	1.378	0.249	10	362-0055-0000
2,36 / 60	2.638	7.252	9.450	1.457	0.269	10	362-0060-0000
2,5 / 63-65	2.835	6.672	8.121	1.575	0.296	10	362-0065-0000
- / 70	3.110	6.237	6.792	1.732	0.376	10	362-0070-0000
3 / 75-76	3.307	5.802	6.201	1.850	0.403	10	362-0075-0000
- / 80	3.504	5.439	5.906	1.929	0.430	10	362-0080-0000
3,5 / 89-90	3.898	4.859	5.020	2.126	0.477	10	362-0090-0000
4 / 100-102	4.291	4.351	3.987	2.323	0.531	10	362-0100-0000
- / 110	4.685	3.989	3.544	2.520	0.578	10	362-0110-0000
4,72 / 120	5.079	3.626	3.396	2.717	0.632	10	362-0120-0000
5 / 125-127	5.276	3.481	2.658	2.835	0.659	10	362-0125-0000
6 / 150-152	6.260	2.901	2.658	3.307	0.780	10	362-0150-0000
6,3 / 160	6.654	2.756	2.215	3.504	0.833	10	362-0160-0000
8 / 200-203	8.268	2.176	1.772	4.331	1.042	10	362-0200-0000

Positive and negative pressure ratings are the recommended maximum operating values. Products can be manufactured to meet higher operating values upon request. The bend radius is calculated from the center of the hose in an arched position. Additional information at [www.norres.com/us/technology/](http://www.norres.com/us/technology/). NORRES reserves the right to modify technical data at any time. Technical data based on tests at 68°F and are approx. values. Proper use and maintenance of NORRES hoses is the sole responsibility of purchaser and ultimate user of the product. The individual conditions, applications and the number of variables make firm recommendations technically impossible. This information is intended as a general guide only.

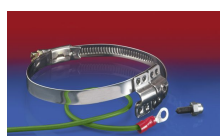
I.D.	outer Ø	Pressure	Vacuum	Bending radius	Weight	Dimensions in Stock	Order No.
(in / mm)	(in)	(psi)	(inHG)	(in)	(lb/ft)	(ft)	
- / 250	10.236	1.740	0.738	5.315	1.290	10	362-0250-0000

Positive and negative pressure ratings are the recommended maximum operating values. Products can be manufactured to meet higher operating values upon request. The bend radius is calculated from the center of the hose in an arched position. Additional information at [www.norres.com/us/technology/](http://www.norres.com/us/technology/). NORRES reserves the right to modify technical data at any time. Technical data based on tests at 68°F and are approx. values. Proper use and maintenance of NORRES hoses is the sole responsibility of purchaser and ultimate user of the product. The individual conditions, applications and the number of variables make firm recommendations technically impossible. This information is intended as a general guide only.

## Accessories



CLAMP 212



CLAMP 212 EC



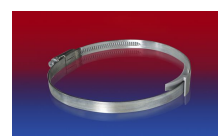
CONNECT 223



CLAMP 213



CLAMP 217



CLAMP 210 BRIDGE CLAMP



CONNECT 270-271



CONNECT 228