

Antistatic polyurethane hose, medium-heavy duty, black

Application

- flexible hose/ ducting for abrasive powder, bulk material, granulate and for gases
- air supply: UV dryer, IR dryer
- extraction unit, dust collection systems, filter system, oil mist extraction
- explosion hazard area
- textile industry, fiber extraction: spinning machine, knitting machine, weaving loom machine
- clean room ventilation, semiconductor production machine
- surface preparation: shot blasting/ sand blasting recovery (blasting chamber), ship yard, stripping machine, flooring preparation machine, grinding machine
- heating hose: exterior hose as protection hose

Properties

- medium-heavy duty

- highly abrasion resistant
- good resistance to oil, gasoline, and chemicals
- very good low temperature flexibility
- permanently antistatic wall: according to ISO 8031 electrical and surface resistance $<10^9 \Omega$ (according to TRGS 727 $<2,5 \cdot 10^8 \Omega \cdot m$ and NFPA 652 $10^8-10^9 \Omega$)
- in accordance with ATEX 2014/34/EU (1999/92/EC) and German TRGS 727: pneumatic transport of flammable dusts and bulk materials (Zone 20, 21, 22 inside), aspiration of combustible dusts (Zone 22 inside),
- in accordance with ATEX 2014/34/EU (1999/92/EC) and German TRGS 727: for conveying for flammable liquids (inside zone 0, 1, 2), for conveying for non-flammable liquids, for use in zone 1 and 2 (gases), for use in zone 0 (gases)
- according to DIN 26057 Type 2
- conforms to RoHS guideline
- REACH according to --> Technology / Technical Information / REACH

- short time to 255 °F

Design

- AIRDUC® profile hose
- spring steel wire firmly embedded in wall
- wall: permanently antistatic premium ester-polyurethane (Pre-PUR®)
- wall thickness 0.03 in approx.

Delivery variants

- further diameters and lengths available on request
- black (standard)
- special colors: full colored
- customer-specific branding

Temperature range

- 40 °F to 195 °F

I.D. (in / mm)	outer Ø (in)	Pressure DIN 26057 (50% Elongation) (psi)	Vacuum DIN 26057 (axially fixed) (inHG)	Bending radius (in)	Weight (lb/ft)	Dimensions in Stock (ft)	Order No.
- / 40	1.850	22.554 (50.184)	13.879 (29.530)	1.260	0.222	10	350-0040-3030
2 / 50-51	2.244	18.130 (40.321)	11.221 (29.530)	1.496	0.269	10	350-0050-3030
2,36 / 60	2.638	15.229 (33.794)	9.302 (24.510)	1.732	0.323	10	350-0060-3030
- / 70	3.031	13.054 (29.008)	5.463 (24.510)	1.969	0.376	10	350-0070-3030
3 / 75-76	3.228	12.183 (27.122)	5.168 (21.262)	2.087	0.397	10	350-0075-3030
- / 80	3.425	11.458 (25.382)	4.725 (18.899)	2.205	0.430	10	350-0080-3030
4 / 100-102	4.213	9.210 (20.451)	3.987 (19.490)	2.677	0.538	10	350-0100-3030
4,72 / 120	5.000	7.687 (16.970)	3.396 (13.584)	3.150	0.638	10	350-0120-3030
5 / 125-127	5.197	7.397 (16.390)	3.248 (12.403)	3.268	0.659	10	350-0125-3030
5,5 / 140	5.787	6.599 (14.649)	2.805 (9.745)	3.622	0.733	10	350-0140-3030
6 / 150-152	6.181	6.164 (13.634)	2.215 (10.631)	3.858	0.941	10	350-0150-3030
6,3 / 160	6.575	5.802 (12.764)	2.067 (9.154)	4.094	1.008	10	350-0160-3030
8 / 200-203	8.150	4.641 (10.298)	1.624 (5.611)	5.039	1.250	10	350-0200-3030
- / 250	10.118	3.699 (8.267)	1.329 (3.544)	6.220	1.552	10	350-0250-3030
- / 300	12.087	3.118 (6.817)	1.034 (2.362)	7.402	1.862	10	350-0300-3030

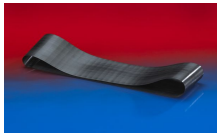
Positive and negative pressure ratings are the recommended maximum operating values. Products can be manufactured to meet higher operating values upon request. The bend radius is calculated from the center of the hose in an arched position. Additional information at www.norres.com/us/technology/. NORRES reserves the right to modify technical data at any time. Technical data based on tests at 68 °F and are approx. values. Proper use and maintenance of NORRES hoses is the sole responsibility of purchaser and ultimate user of the product. The individual conditions, applications and the number of variables make firm recommendations technically impossible. This information is intended as a general guide only.

Positive and negative pressure ratings are the recommended maximum operating values. Products can be manufactured to meet higher operating values upon request. The bend radius is calculated from the center of the hose in an arched position. Additional information at www.norres.com/us/technology/. NORRES reserves the right to modify technical data at any time. Technical data based on tests at 68 °F and are approx. values. Proper use and maintenance of NORRES hoses is the sole responsibility of purchaser and ultimate user of the product. The individual conditions, applications and the number of variables make firm recommendations technically impossible. This information is intended as a general guide only.

Accessories



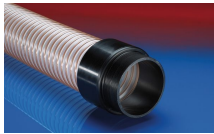
CONNECT MOULD ASSEMBLY 233



CONNECT 228



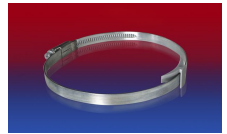
CONNECT 223



CONNECT 242



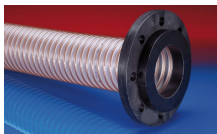
CONNECT THREAD FITTING 234



CLAMP 210 BRIDGE CLAMP



CONNECT TRI-CLAMP FITTING 245



CONNECT 244



CONNECT 243



CONNECT 245



CONNECT 246 AS



CONNECT ASEPTIC FITTING 249



CONNECT 270-271



CONNECT 240 + 241 AS



CLAMP 212



CLAMP 213



CONNECT 240 EC



CLAMP 217



CONNECT DAIRY FITTING 247