

Electrically conductive polyurethane hose, medium-heavy duty

Application

- flexible hose/ ducting for abrasive powder, bulk material, granulate and for gases
- industrial vacuum cleaners, vacuum cleaners
- explosion hazard area
- Coal mine, mine, tunnelling: ventilation, methane extraction

Properties

- highly abrasion resistant
- good resistance to oil, gasoline, and chemicals
- very good low temperature flexibility

- very good low temperature flexibility
- electrically conductive wall: electrical and surface resistance $<10^3\Omega$ (according to NFPA 652 $<10^6\Omega$)
- in accordance with ATEX 2014/34/EU (1999/92/EC) and German TRGS 727: pneumatic transport of flammable dusts and bulk materials (Zone 20, 21, 22 inside), aspiration of combustible dusts (Zone 22 inside),
- in accordance with ATEX 2014/34/EU (1999/92/EC) and German TRGS 727: for conveying for flammable liquids (inside zone 0, 1, 2), for conveying for non-flammable liquids, for use in zone 1 and 2 (gases), for use in zone 0 (gases)
- according to DIN 26057 Type 2
- conforms to RoHS guideline
- REACH according to --> Technology / Technical Information / REACH

- AIRDUC® profile hose
- spring steel wire firmly embedded in wall
- wall: electrically conductive premium ester-polyurethane (Pre-PUR®)
- wall thickness 0.03 in approx.

Delivery variants

- further diameters and lengths available on request
- black (standard)
- customer-specific branding

Temperature range

- 40°F to 195°F

I.D.	outer Ø	Pressure DIN 26057 (50% Elongation)	Vacuum DIN 26057 (axially fixed)	Bending radius	Weight	Dimensions in Stock	Order No.	Production lengths
(in / mm)	(in)	(psi)	(inHG)	(in)	(lb/ft)	(ft)		(ft)
1 / 25	1.260	35.462 (58.886)	13.584 (29.530)	0.906	0.134	10	351-0025-1003	-
- / 30	1.496	28.210 (46.703)	12.993 (29.530)	1.024	0.175	10	351-0030-1003	-
1,25 / 32	1.575	26.542 (43.947)	12.698 (29.530)	1.063	0.188	10	351-0032-1003	-
1,5 / 38	1.811	22.481 (37.130)	11.812 (29.530)	1.220	0.215	10	351-0038-1003	-
- / 40	1.890	21.393 (35.390)	11.517 (29.530)	1.260	0.228	10	351-0040-1003	-
1,75 / 44-45	2.087	19.073 (31.619)	10.631 (29.530)	1.378	0.255	10	351-0045-1003	-
2 / 50-51	2.283	17.260 (28.428)	10.040 (29.530)	1.496	0.276	10	351-0050-1003	-
2,36 / 60	2.677	14.431 (23.787)	7.825 (24.805)	1.732	0.329	10	351-0060-1003	-
2,5 / 63-65	2.874	13.344 (22.046)	6.940 (20.966)	1.850	0.356	10	351-0065-1003	-
- / 70	3.110	12.401 (20.451)	5.758 (24.805)	1.969	0.383	10	351-0070-1003	-
3 / 75-76	3.307	11.603 (19.145)	5.315 (21.557)	2.087	0.410	10	351-0075-1003	-
- / 80	3.504	10.878 (17.985)	4.872 (18.899)	2.205	0.437	10	351-0080-1003	-
3,5 / 89-90	3.898	9.718 (15.954)	4.282 (15.060)	2.441	0.491	10	351-0090-1003	-
4 / 100-102	4.291	8.775 (14.504)	3.396 (12.107)	2.677	0.531	10	351-0100-1003	-
- / 110	4.685	7.977 (13.199)	2.953 (10.040)	2.913	0.585	10	351-0110-1003	-
4,72 / 120	5.079	7.325 (12.038)	2.510 (8.268)	3.150	0.632	10	351-0120-1003	-
5 / 125-127	5.276	7.034 (11.603)	2.215 (7.678)	3.268	0.659	10	351-0125-1003	-
5,5 / 140	5.866	6.237 (10.298)	2.215 (6.201)	3.622	0.733	10	351-0140-1003	-

Positive and negative pressure ratings are the recommended maximum operating values. Products can be manufactured to meet higher operating values upon request. The bend radius is calculated from the center of the hose in an arched position. Additional information at www.norres.com/us/technology/. NORRES reserves the right to modify technical data at any time. Technical data based on tests at 68°F and are approx. values. Proper use and maintenance of NORRES hoses is the sole responsibility of purchaser and ultimate user of the product. The individual conditions, applications and the number of variables make firm recommendations technically impossible. This information is intended as a general guide only.

I.D.	outer Ø	Pressure DIN 26057 (50% Elongation)	Vacuum DIN 26057 (axially fixed)	Bending radius	Weight	Dimensions in Stock	Order No.	Production lengths
(in / mm)	(in)	(psi)	(inHG)	(in)	(lb/ft)	(ft)		(ft)
6 / 150-152	6.260	5.874 (9.718)	2.067 (10.926)	3.858	0.894	10	351-0150-1003	-
6,3 / 160	6.654	5.512 (9.138)	1.772 (9.450)	4.094	0.948	10	351-0160-1003	-
7 / 178-180	7.441	4.859 (8.122)	1.477 (7.087)	4.567	1.069	10	351-0180-1003	-
8 / 200-203	8.228	4.424 (7.252)	1.477 (5.611)	5.039	1.183	10	351-0200-1003	-
- / 250	10.197	3.553 (5.802)	0.591 (3.248)	6.220	1.633	10	351-0250-1003	-

Positive and negative pressure ratings are the recommended maximum operating values. Products can be manufactured to meet higher operating values upon request. The bend radius is calculated from the center of the hose in an arched position. Additional information at www.norres.com/us/technology/. NORRES reserves the right to modify technical data at any time. Technical data based on tests at 68°F and are approx. values. Proper use and maintenance of NORRES hoses is the sole responsibility of purchaser and ultimate user of the product. The individual conditions, applications and the number of variables make firm recommendations technically impossible. This information is intended as a general guide only.

Accessories



CLAMP 217



CLAMP 212



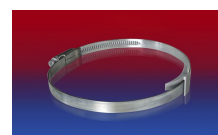
CONNECT 240 EC



CONNECT 270-271



CONNECT 223



CLAMP 210 BRIDGE
CLAMP



CONNECT 246 AS



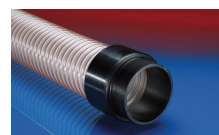
CLAMP 213



CONNECT 243



CONNECT THREAD
FITTING 234



CONNECT 242



CONNECT 228



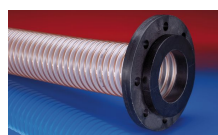
CONNECT MOULD
ASSEMBLY 233



CONNECT 240 + 241
AS



CONNECT 245



CONNECT 244



CLAMP 212 EC