

Antistatic food hose and pharmaceutical hose, medium-heavy duty and reinforced, stainless steel (INOX)

Application

- flexible hose/ ducting for abrasive powder, bulk material, granulate and for gases
- food industry, pharmaceutical industry: food, pharmaceutical
- conveying of dry foods e.g. rice, cereals, sugar, milk powder, powders, coffee, tea, grains, flour, frozen foods
- vacuum conveying equipment, vacuum hopper, suction conveyor, dosing system
- pelletizing machines/ tablet presses
- mixer, dryer, packaging machine, bulk-bag (big bag)-charging and discharging, mill
- explosion hazard area

Properties

- medium-heavy duty
- highly abrasion resistant
- Approved by an independent testing laboratory for the complete hose acc. to EU-Directive 10/2011 and EC 1935/2004 and the latest EU-Directive 2015/174, food grade polyurethane, complies with: FDA 21 CFR 177.2600

- Approved by an independent testing laboratory for the complete hose acc. to EU-Directive 10/2011 and EC 1935/2004 and the latest EU-Directive 2015/174, food grade polyurethane, complies with: FDA 21 CFR 177.2600
- Approval acc. to EU-Directive 10/2011 (food simulant E) and EC 1935/2004
- odorless and tasteless
- microbe and hydrolysis resistant
- good resistance to oil, gasoline, and chemicals
- very good low temperature flexibility
- permanently antistatic wall: according to ISO 8031 electrical and surface resistance $<10^9 \Omega$ (according to TRGS 727 $<2,5 \cdot 10^9 \Omega \cdot m$ and NFPA 652 $10^8-10^9 \Omega$)
- in accordance with ATEX 2014/34/EU (1999/92/EC) and German TRGS 727: pneumatic transport of flammable dusts and bulk materials (Zone 20, 21, 22 inside), aspiration of combustible dusts (Zone 22 inside),
- in accordance with ATEX 2014/34/EU (1999/92/EC) and German TRGS 727: for conveying for flammable liquids (inside zone 0, 1, 2), for conveying for non-flammable liquids, for use in zone 1 and 2 (gases), for use in zone 0 (gases)
- manufacturing process acc. GMP EC 2023/2006
- conforms to RoHS guideline
- REACH according to --> Technology / Technical Information / REACH

- 40°F to 195°F

Design

- AIRDUC® profile hose
- spring steel wire firmly embedded in wall
- spiral: stainless steel wire (INOX)
- wall: permanently antistatic premium ether-polyurethane (Pre-PUR®)
- wall thickness 0.04 approx.

Delivery variants

- further diameters and lengths available on request
- transparent (standard)
- customer-specific branding

I.D.	outer Ø	Pressure DIN 26057 (50% Elongation)	Vacuum DIN 26057 (axially fixed)	Bending radius	Weight	Dimensions in Stock	Order No.	Production lengths
(in / mm)	(in)	(psi)	(inHG)	(in)	(lb/ft)	(ft)		(ft)
1 / 25	1.299	38.291 (65.123)	20.080 (29.530)	0.866	0.148	5 10	351-0025-1018	-
1,25 / 32	1.575	30.313 (51.634)	12.993	1.102	0.188	5 10	351-0032-1018	-
1,5 / 38	1.811	25.745 (43.802)	10.926 (29.530)	1.260	0.215	5 10	351-0038-1018	-
- / 40	1.890	24.512 (41.626)	10.483 (29.530)	1.299	0.228	5 10	351-0040-1018	25
2 / 50-51	2.283	19.798 (33.649)	8.416 (29.530)	1.535	0.276	5 10	351-0050-1018	-
2,36 / 60	2.677	16.607 (28.138)	6.940 (24.215)	1.772	0.329	5 10	351-0060-1018	25
2,5 / 63-65	2.874	15.302 (25.962)	6.497 (20.671)	1.890	0.397	5 10	351-0065-1018	-
- / 70	3.110	14.286 (24.222)	4.282 (24.510)	2.047	0.397	5 10	351-0070-1018	25
3 / 75-76	3.307	13.344 (22.626)	3.987 (21.262)	2.165	0.430	5 10	351-0075-1018	-
- / 80	3.504	12.546 (21.176)	3.691 (18.899)	2.283	0.457	5 10	351-0080-1018	25

Positive and negative pressure ratings are the recommended maximum operating values. Products can be manufactured to meet higher operating values upon request. The bend radius is calculated from the center of the hose in an arched position. Additional information at www.norres.com/us/technology/. NORRES reserves the right to modify technical data at any time. Technical data based on tests at 68°F and are approx. values. Proper use and maintenance of NORRES hoses is the sole responsibility of purchaser and ultimate user of the product. The individual conditions, applications and the number of variables make firm recommendations technically impossible. This information is intended as a general guide only.

I.D.	outer Ø	Pressure DIN 26057 (50% Elongation)	Vacuum DIN 26057 (axially fixed)	Bending radius	Weight	Dimensions in Stock	Order No.	Production lengths
(in / mm)	(in)	(psi)	(inHG)	(in)	(lb/ft)	(ft)		(ft)
3,5 / 89-90	3.898	11.168 (18.855)	3.248 (14.765)	2.520	0.504	5 10	351-0090-1018	25
4 / 100-102	4.291	10.080 (17.115)	3.101 (19.490)	2.756	0.652	5 10	351-0100-1018	-
- / 110	4.685	9.138 (15.519)	2.805 (15.946)	2.992	0.712	5 10	351-0110-1018	25
5 / 125-127	5.276	8.050 (13.634)	2.510 (12.403)	3.346	0.806	5 10	351-0125-1018	-
5,5 / 140	5.866	7.252 (12.183)	2.215 (9.745)	3.701	0.901	5 10	351-0140-1018	25
6 / 150-152	6.260	6.744 (11.458)	2.215 (10.926)	3.937	1.022	5 10	351-0150-1018	-
6,3 / 160	6.654	6.309 (10.733)	2.067 (9.450)	4.173	1.082	5 10	351-0160-1018	25
7 / 178-180	7.441	5.657 (9.573)	1.772 (7.383)	4.646	1.216	5 10	351-0180-1018	-
8 / 200-203	8.228	5.076 (8.557)	1.624 (5.906)	5.236	1.364	5 10	351-0200-1018	-
- / 225	9.213	4.496 (7.687)	1.181 (4.134)	5.709	1.452	5 10	351-0225-1018	25

Positive and negative pressure ratings are the recommended maximum operating values. Products can be manufactured to meet higher operating values upon request. The bend radius is calculated from the center of the hose in an arched position. Additional information at www.norres.com/us/technology/. NORRES reserves the right to modify technical data at any time. Technical data based on tests at 68°F and are approx. values. Proper use and maintenance of NORRES hoses is the sole responsibility of purchaser and ultimate user of the product. The individual conditions, applications and the number of variables make firm recommendations technically impossible. This information is intended as a general guide only.

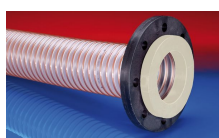
Accessories



CLAMP 212 EC



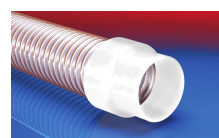
CONNECT ASEPTIC
FITTING 249



CONNECT 244
FOOD



CONNECT 223



CONNECT 240 + 241
FOOD



CONNECT 270-271



CLAMP 213



CONNECT 246
FOOD



CONNECT 228



CONNECT MOULD
ASSEMBLY 233



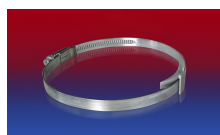
CONNECT 245
FOOD



CONNECT DAIRY
FITTING 247



CONNECT 243
FOOD



CLAMP 210 BRIDGE
CLAMP



CLAMP 217



CLAMP 212



CONNECT THREAD
FITTING 234



CONNECT TRI-
CLAMP FITTING 245