

PVC hose, heavy duty

## Application

- flexible hose/ ducting for gases and for dust, powder, fibers
- extraction unit, dust collection systems, filter system, oil mist extraction
- galvanic extraction

## Properties

- heavy duty
- increased pressure and vacuum resistance
- good resistance to alkalis and acids
- good resistance to chemicals

- good resistance to chemicals

- phthalate-free
- flame-retardant according to: UL94-HB
- conforms to RoHS guideline
- REACH according to --> Technology / Technical Information / REACH

## Temperature range

- 5°F to 160°F
- short time to 175°F

## Design

- spring steel wire firmly embedded in wall
- wall: high grade soft PVC
- wall thickness 0.055 to 0.06 in approx.

## Delivery variants

- further diameters and lengths available on request
- gray (standard)
- special colors: transparent, full colored
- customer-specific branding

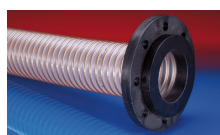
I.D.	outer Ø	Pressure	Vacuum	Bending radius	Weight	Dimensions in Stock	Order No.
(in / mm)	(in)	(psi)	(inHG)	(in)	(lb/ft)	(ft)	
- / 20	1.102	38.653	29.530	0.709	0.188	10 15	345-0020-0000
1 / 25	1.299	33.794	29.530	0.827	0.222	10 15	345-0025-0000
- / 30	1.575	28.573	28.644	0.984	0.302	10 15	345-0030-0000
1,25 / 32	1.654	26.977	26.872	1.024	0.316	10 15	345-0032-0000
1,36 / 35	1.772	24.802	24.510	1.102	0.343	10 15	345-0035-0000
1,5 / 38	1.890	22.989	22.590	1.142	0.370	10 15	345-0038-0000
- / 40	1.969	21.901	21.409	1.181	0.383	10 15	345-0040-0000
- / 42	2.047	19.798	25.396	1.220	0.403	10 15	345-0042-0000
2 / 50-51	2.362	17.695	24.805	1.378	0.470	10 15	345-0050-0000
2,36 / 60	2.756	14.867	14.322	1.575	0.558	10 15	345-0060-0000
2,5 / 63-65	2.953	13.779	13.289	1.693	0.598	10 15	345-0065-0000
- / 70	3.228	12.836	11.221	2.480	0.712	10 15	345-0070-0000
3 / 75-76	3.425	12.038	9.745	2.638	0.759	10 15	345-0075-0000
- / 80	3.622	11.313	9.154	2.756	0.806	10 15	345-0080-0000
- / 85	3.819	10.660	12.993	2.913	0.853	10 15	345-0085-0000
3,5 / 89-90	4.016	10.080	8.121	3.031	0.901	10 15	345-0090-0000
4 / 100-102	4.409	9.065	7.530	3.307	0.995	10 15	345-0100-0000
- / 105	4.606	8.702	9.450	3.465	1.042	10 15	345-0105-0000
- / 110	4.803	8.267	6.792	3.583	1.089	10 15	345-0110-0000
4,5 / 114-115	5.000	7.905	6.497	3.740	1.129	10 15	345-0115-0000
4,72 / 120	5.197	7.615	6.201	3.858	1.176	10 15	345-0120-0000
5 / 125-127	5.394	7.325	6.054	4.016	1.223	10 15	345-0125-0000
- / 130	5.591	7.034	5.758	4.134	1.270	10 15	345-0130-0000
5,5 / 140	5.984	6.527	5.315	4.409	1.364	10 15	345-0140-0000
6 / 150-152	6.378	6.092	5.020	4.685	1.566	10 15	345-0150-0000
6,3 / 160	6.772	5.729	4.725	4.961	1.667	10 15	345-0160-0000
7 / 178-180	7.559	5.076	4.134	5.512	1.868	10 15	345-0180-0000
8 / 200-203	8.386	4.569	2.953	6.142	2.110	10	345-0200-0000

Positive and negative pressure ratings are the recommended maximum operating values. Products can be manufactured to meet higher operating values upon request. The bend radius is calculated from the center of the hose in an arched position. Additional information at [www.norres.com/us/technology/](http://www.norres.com/us/technology/). NORRES reserves the right to modify technical data at any time. Technical data based on tests at 68°F and are approx. values. Proper use and maintenance of NORRES hoses is the sole responsibility of purchaser and ultimate user of the product. The individual conditions, applications and the number of variables make firm recommendations technically impossible. This information is intended as a general guide only.

I.D.	outer Ø	Pressure	Vacuum	Bending radius	Weight	Dimensions in Stock	Order No.
(in / mm)	(in)	(psi)	(inHG)	(in)	(lb/ft)	(ft)	
- / 225	9.370	4.061	2.805	6.850	2.366	10	345-0225-0000
- / 250	10.354	3.699	2.510	7.520	2.621	10	345-0250-0000
11 / 280	11.535	3.263	2.362	8.346	2.923	10	345-0280-0000
- / 300	12.323	3.046	2.215	8.898	3.132	10	345-0300-0000
- / 325	13.307	2.828	1.919	9.606	3.676	10	345-0325-0000
- / 350	14.291	2.611	1.772	10.276	3.952	10	345-0350-0000

Positive and negative pressure ratings are the recommended maximum operating values. Products can be manufactured to meet higher operating values upon request. The bend radius is calculated from the center of the hose in an arched position. Additional information at [www.norres.com/us/technology/](http://www.norres.com/us/technology/). NORRES reserves the right to modify technical data at any time. Technical data based on tests at 68°F and are approx. values. Proper use and maintenance of NORRES hoses is the sole responsibility of purchaser and ultimate user of the product. The individual conditions, applications and the number of variables make firm recommendations technically impossible. This information is intended as a general guide only.

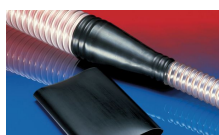
## Accessories



CONNECT 244



CLAMP 213



CONNECT 223



CLAMP 212 EC



CONNECT 243



CONNECT 245



CLAMP 212



CONNECT 270-271



CONNECT 242



CONNECT 228



CLAMP 217



CONNECT 246  
FOOD



CONNECT 240 + 241  
AS