



Suction hose and pressure hose according to UL94-V0, DIN 4102-B1, light weight

Application

- flexible hose/ ducting for gases and for abrasive dust, powder, fibers
- rail vehicle, train, railway, tram, boat, ship/ vessel, yacht: ventilation, heating, roof drainage, sand conveying in rail vehicle braking systems, sanitary installation

Properties

- light weight
- highly flexible + compressible 3:1
- abrasion-resistant
- microbe and hydrolysis resistant
- good resistance to oil, gasoline, and chemicals

- good resistance to oil, gasoline, and chemicals
- flame-retardant according to: UL94-V0, DIN 4102-B1, FMVSS 302
- conforms to RoHS guideline
- REACH according to --> Technology / Technical Information / REACH

Temperature range

- 40°F to 195°F
- short time to 255°F

Design

- PROTAPE® tape hose

- extruded tape

- wall: special premium polyurethane with flame retardant additive (Pre-PUR®)
- wall thickness 0.025 in approx.

Delivery variants

- further diameters and lengths available on request
- transparent (standard)
- special colors: partially colored, completely colored
- customer-specific branding

I.D.	outer Ø	Pressure	Vacuum	Bending radius	Weight	Production lengths	Order No.
(in / mm)	(in)	(psi)	(inHG)	(in)	(lb/ft)	(ft)	
- / 40	1.850	14.722	8.859	1.850	0.175	10 15	332-0040-0000
2 / 50-51	2.283	11.821	7.678	2.283	0.242	10 15	332-0050-0000
2,36 / 60	2.677	9.863	6.201	2.677	0.289	10 15	332-0060-0000
2,5 / 63-65	2.874	9.138	5.315	2.874	0.316	10 15	332-0065-0000
- / 70	3.071	8.485	4.430	3.071	0.336	10 15	332-0070-0000
3 / 75-76	3.268	7.905	4.134	3.268	0.356	10 15	332-0075-0000
- / 80	3.465	7.397	3.839	3.465	0.383	10 15	332-0080-0000
4 / 100-102	4.252	5.947	2.658	4.252	0.444	10 15	332-0100-0000
- / 110	4.646	5.439	2.362	4.646	0.491	10 15	332-0110-0000
4,72 / 120	5.039	4.931	2.215	5.039	0.531	10 15	332-0120-0000
5 / 125-127	5.236	4.786	1.772	5.236	0.551	10 15	332-0125-0000
5,5 / 140	5.827	4.279	1.772	5.827	0.618	10 15	332-0140-0000
6 / 150-152	6.220	3.989	1.772	6.220	0.659	10 15	332-0150-0000
6,3 / 160	6.614	3.699	1.477	6.614	0.699	10 15	332-0160-0000
- / 170	7.008	3.481	1.329	7.008	0.746	10 15	332-0170-0000
7 / 178-180	7.402	3.336	1.181	7.402	0.786	10 15	332-0180-0000
8 / 200-203	8.189	2.973	1.181	8.189	1.035	10 15	332-0200-0000
- / 225	9.173	2.611	0.886	9.173	1.176	10 15	332-0225-0000
- / 250	10.157	2.393	0.443	10.157	1.277	10 15	332-0250-0000
- / 275	11.142	2.176	0.443	11.142	1.418	10	332-0275-0000
11 / 280	11.339	2.103	0.443	11.339	1.445	10	332-0280-0000
- / 300	12.165	1.958	0.443	12.165	1.700	10	332-0300-0000
- / 315	12.756	1.886	0.295	12.756	1.781	10	332-0315-0000
- / 325	13.150	1.813	0.295	13.150	1.841	10	332-0325-0000
- / 350	14.134	1.668	0.295	14.134	1.983	10	332-0350-0000
- / 400	16.102	1.523	0.295	16.102	2.258	10	332-0400-0000

Positive and negative pressure ratings are the recommended maximum operating values. Products can be manufactured to meet higher operating values upon request. The bend radius is calculated from the center of the hose in an arched position. Additional information at www.norres.com/us/technology/. NORRES reserves the right to modify technical data at any time. Technical data based on tests at 68°F and are approx. values. Proper use and maintenance of NORRES hoses is the sole responsibility of purchaser and ultimate user of the product. The individual conditions, applications and the number of variables make firm recommendations technically impossible. This information is intended as a general guide only.

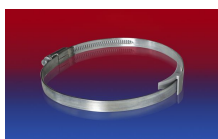
I.D.	outer Ø	Pressure	Vacuum	Bending radius	Weight	Production lengths	Order No.
(in / mm)	(in)	(psi)	(inHG)	(in)	(lb/ft)	(ft)	
- / 450	18.071	1.305	0.148	18.071	2.534	10	332-0450-0000
- / 500	20.079	1.160	0.148	20.079	3.468	10	332-0500-0000

Positive and negative pressure ratings are the recommended maximum operating values. Products can be manufactured to meet higher operating values upon request. The bend radius is calculated from the center of the hose in an arched position. Additional information at www.norres.com/us/technology/. NORRES reserves the right to modify technical data at any time. Technical data based on tests at 68°F and are approx. values. Proper use and maintenance of NORRES hoses is the sole responsibility of purchaser and ultimate user of the product. The individual conditions, applications and the number of variables make firm recommendations technically impossible. This information is intended as a general guide only.

Accessories



CONNECT 223



CLAMP 210 BRIDGE
CLAMP



CLAMP 217



CLAMP 212



CONNECT 270-271



CLAMP 213