

Antistatic polyurethane hose, medium-heavy duty, microbe resistant, flame-resistant

## Application

- flexible hose/ ducting for high volume of abrasive powder, bulk material, granulate and for gases
- extraction unit, dust collection systems, filter system, oil mist extraction
- compressor, side channel blower, vacuum pump, pressure pump, pump
- municipal vehicle: sweeper, sweeping machine
- municipal vehicle: lawn mower, slope mower, leaf blower/ leaf collector

## Properties

- medium-heavy duty
- highly abrasion resistant
- increased pressure and vacuum resistance

- microbe resistant
- good resistance to oil, gasoline, and chemicals
- very good low temperature flexibility
- flame-retardant according to: DIN 4102-B1
- permanently antistatic wall: in accordance with ISO 8031 electrical and surface resistance  $<10^9 \Omega$
- conforms to RoHS guideline
- REACH according to --> Technology / Technical Information / REACH

## Temperature range

- 40 °F to 195 °F
- short time to 255 °F

## Design

- patented PROTAPE® tape hose
- spring steel wire integrated in wall
- plastic coated spring steel wire
- wall: permanently antistatic premium ester-polyurethane (Pre-PUR®)
- wall thickness 0.035 in approx.

## Delivery variants

- further diameters and lengths available on request
- transparent (standard)
- Imprint: <ID> antistatic + microbe resistant + flame retardant <neutral batch no.>

I.D.	outer Ø	Pressure DIN 26057 (50% Elongation)	Vacuum DIN 26057 (axially fixed)	Bending radius	Weight	Dimensions in Stock	Order No.	Production lengths
(in / mm)	(in)	(psi)	(inHG)	(in)	(lb/ft)	(ft)		(ft)
- / 40	1.890	14.794 (38.291)	14.913 (29.530)	1.496	0.168	10	333-0040-0007	-
2 / 50-51	2.283	11.893 (30.748)	12.255 (29.530)	1.890	0.208	10	333-0050-0007	-
2,36 / 60	2.677	9.935 (25.672)	10.336 (26.577)	2.283	0.242	10	333-0060-0007	-
2,5 / 63-65	2.835	9.210 (23.714)	9.450 (22.886)	2.480	0.255	10	333-0065-0007	-
- / 70	3.071	8.557 (22.046)	8.859 (19.785)	2.677	0.282	10	333-0070-0007	-
3 / 75-76	3.268	7.977 (20.596)	8.268 (17.423)	2.874	0.296	10	333-0075-0007	-
- / 80	3.465	7.470 (19.290)	7.678 (15.356)	3.071	0.316	10	333-0080-0007	-
4 / 100-102	4.291	6.019 (15.519)	3.248 (14.322)	3.858	0.652	10	333-0100-0007	-
5 / 125-127	5.276	4.859 (12.401)	2.658 (9.302)	4.843	0.800	10	333-0125-0007	-
5,5 / 140	5.827	4.279 (11.096)	2.362 (7.383)	5.433	0.887	10	333-0140-0007	-
6 / 150-152	6.260	3.989 (10.370)	2.215 (6.497)	5.827	0.974	10	333-0150-0007	-
6,3 / 160	6.614	3.771 (9.718)	2.067 (5.758)	6.220	1.008	10	333-0160-0007	-
7 / 178-180	7.323	3.336 (8.630)	1.772 (4.430)	7.008	1.116	10	333-0180-0007	-
8 / 200-203	8.268	3.046 (7.760)	1.624 (3.691)	7.795	1.270	10	333-0200-0007	-
- / 250	10.157	2.393 (6.237)	1.329 (2.805)	9.764	1.559	10	333-0250-0007	-
- / 300	12.126	2.031 (5.076)	1.181 (1.919)	11.732	1.868	10	333-0300-0007	-

Positive and negative pressure ratings are the recommended maximum operating values. Products can be manufactured to meet higher operating values upon request. The bend radius is calculated from the center of the hose in an arched position. Additional information at [www.norres.com/us/technology/](http://www.norres.com/us/technology/). NORRES reserves the right to modify technical data at any time. Technical data based on tests at 68 °F and are approx. values. Proper use and maintenance of NORRES hoses is the sole responsibility of purchaser and ultimate user of the product. The individual conditions, applications and the number of variables make firm recommendations technically impossible. This information is intended as a general guide only.

## Accessories



CLAMP 213



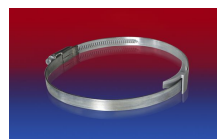
CLAMP 212



CONNECT 228



CONNECT 270-271



CLAMP 210 BRIDGE  
CLAMP



CLAMP 217



CONNECT 223