

Polyurethane ducting, (to +255 °F)

Application

- flexible hose/ ducting for gases and for abrasive dust, powder, fibers
- air supply: UV dryer, IR dryer
- welding fume extraction
- extraction arm
- tent heating, airport gangway heating, heaters for construction sites

Properties

- fabric reinforced
- super-light weight

- highly flexible + compressible 4:1
- abrasion-resistant
- good resistance to oil, gasoline, and chemicals
- flame-retardant wall according to: NF P 92-503 M1
- conforms to RoHS guideline
- REACH according to --> Technology / Technical Information / REACH

Temperature range

- 40 °F to 255 °F

Design

- spring steel wire integrated in wall
- fabric-reinforced tape
- wall: polyurethane coated fabric
- wall thickness 0.01 in approx.

Delivery variants

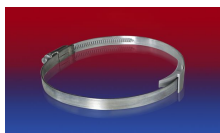
- further diameters and lengths available on request
- dark-gray (standard)
- customer-specific branding
- compressed packed in poly bag (low transportation cost / risk, minimum storage size)

I.D.	outer Ø	Pressure	Vacuum	Bending radius	Weight	Dimensions in Stock	Order No.
(in / mm)	(in)	(psi)	(inHG)	(in)	(lb/ft)	(ft)	
2 / 50-51	2.323	13.126	9.893	1.339	0.565	7,5 15	370-0051-0000
2,36 / 60	2.677	10.951	8.416	1.496	0.544	7,5 15	370-0060-0000
2,5 / 63-65	2.874	10.153	7.825	1.496	0.538	7,5 15	370-0065-0000
3 / 75-76	3.307	9.863	6.792	1.496	0.517	7,5 15	370-0076-0000
- / 80	3.465	8.267	6.349	1.260	0.524	7,5 15	370-0080-0000
3,5 / 89-90	3.858	7.325	5.611	1.496	0.538	7,5 15	370-0090-0000
4 / 100-102	4.331	6.599	4.134	1.614	0.538	7,5 15	370-0102-0000
- / 110	4.724	6.019	3.544	1.299	0.544	7,5 15	370-0110-0000
5 / 125-127	5.433	5.294	3.101	1.260	0.625	7,5 15	370-0127-0000
5,5 / 140	5.945	4.714	2.805	1.378	0.699	7,5 15	370-0140-0000
6 / 150-152	6.417	4.424	2.510	1.260	0.719	7,5 15	370-0152-0000
6,5 / 165	6.929	3.989	2.362	1.969	0.853	7,5 15	370-0165-0000
7 / 178-180	7.717	3.699	2.215	2.283	0.995	7,5 15	370-0180-0000
8 / 200-203	8.504	3.336	1.624	2.717	1.176	7,5 15	370-0203-0000
10 / 254	10.551	2.611	1.329	2.323	1.337	7,5 15	370-0254-0000

Positive and negative pressure ratings are the recommended maximum operating values. Products can be manufactured to meet higher operating values upon request. The bend radius is calculated from the center of the hose in an arched position. Additional information at www.norres.com/us/technology/. NORRES reserves the right to modify technical data at any time. Technical data based on tests at 68 °F and are approx. values. Proper use and maintenance of NORRES hoses is the sole responsibility of purchaser and ultimate user of the product. The individual conditions, applications and the number of variables make firm recommendations technically impossible. This information is intended as a general guide only.

Accessories

Positive and negative pressure ratings are the recommended maximum operating values. Products can be manufactured to meet higher operating values upon request. The bend radius is calculated from the center of the hose in an arched position. Additional information at www.norres.com/us/technology/. NORRES reserves the right to modify technical data at any time. Technical data based on tests at 68 °F and are approx. values. Proper use and maintenance of NORRES hoses is the sole responsibility of purchaser and ultimate user of the product. The individual conditions, applications and the number of variables make firm recommendations technically impossible. This information is intended as a general guide only.



CLAMP 210 BRIDGE
CLAMP



CLAMP 208



CONNECT 228



CONNECT 223



CONNECT 270-271