

PVC ventilation hose (to +248°F)

## Application

- flexible hose/ ducting for gases
- welding fume extraction
- extraction arm
- construction industry: tunnel ventilation
- tent heating, airport gangway heating, heaters for construction sites
- heating system/ heater: fresh air supply

## Properties

- fabric reinforced
- super-light weight
- highly flexible + compressible 6:1

- highly flexible + compressible 6:1
- very good heat resistance
- good resistance to alkalis and acids
- good resistance to chemicals
- flame-retardant wall according to: NF P 92-503 M1
- conforms to RoHS guideline
- REACH according to --> Technology / Technical Information / REACH

## Temperature range

- 15°F to 230°F
- short time to 250°F

## Design

- PROTAPE® tape hose
- spring steel wire integrated in wall
- fabric-reinforced tape
- wall: PVC coated fabric
- wall thickness 0.01 in approx.

## Delivery variants

- further diameters available on request
- gray (standard)
- customer-specific branding
- compressed packed in poly bag (low transportation cost / risk, minimum storage size)

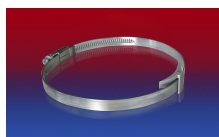
| I.D.        | outer Ø | Pressure | Vacuum | Bending radius | Weight  | Dimensions in Stock | Production lengths | Order No.     |
|-------------|---------|----------|--------|----------------|---------|---------------------|--------------------|---------------|
| (in / mm)   | (in)    | (psi)    | (inHG) | (in)           | (lb/ft) | (ft)                | (ft)               |               |
| 2 / 50-51   | 2.126   | 3.481    | 4.282  | 1.142          | 0.081   | 7,5 15              | -                  | 371-0051-1015 |
| 2,36 / 60   | 2.480   | 0.000    | 0.000  | 0.000          | 0.000   | -                   | 7,5 10 15          | 371-0060-1015 |
| - / 70      | 2.874   | 0.000    | 0.000  | 0.000          | 0.000   | -                   | 7,5 10 15          | 371-0070-1015 |
| 3 / 75-76   | 3.110   | 2.321    | 2.362  | 1.614          | 0.121   | 7,5 15              | -                  | 371-0076-1015 |
| - / 80      | 3.268   | 2.176    | 2.362  | 1.693          | 0.128   | 7,5 15              | 25                 | 371-0080-1015 |
| 3,5 / 89-90 | 3.661   | 1.958    | 2.067  | 1.890          | 0.134   | 7,5 15              | -                  | 371-0090-1015 |
| 4 / 100-102 | 4.134   | 1.740    | 1.477  | 2.126          | 0.161   | 7,5 15              | -                  | 371-0102-1015 |
| - / 110     | 4.449   | 1.595    | 1.329  | 2.283          | 0.181   | 7,5 15              | 25                 | 371-0110-1015 |
| 4,72 / 120  | 4.843   | 0.000    | 0.000  | 0.000          | 0.000   | -                   | 7,5 10 15          | 371-0120-1015 |
| 5 / 125-127 | 5.118   | 1.378    | 1.034  | 2.638          | 0.215   | 7,5 15              | -                  | 371-0127-1015 |
| 5,5 / 140   | 5.630   | 1.233    | 1.034  | 2.874          | 0.235   | 7,5 15              | -                  | 371-0140-1015 |
| 6 / 150-152 | 6.102   | 1.160    | 1.034  | 3.110          | 0.249   | 7,5 15              | -                  | 371-0152-1015 |
| 6,3 / 160   | 6.417   | 1.088    | 0.591  | 3.268          | 0.296   | 7,5 15              | 25 50              | 371-0160-1015 |
| 7 / 178-180 | 7.205   | 0.943    | 0.591  | 3.661          | 0.363   | 7,5 15              | 25                 | 371-0180-1015 |
| 8 / 200-203 | 8.110   | 8.702    | 0.591  | 4.134          | 0.403   | 7,5 15              | -                  | 371-0203-1015 |
| - / 250     | 0.000   | 0.000    | 0.000  | 0.000          | 0.000   | -                   | 7,5 10 15          | 371-0250-1015 |
| 10 / 254    | 10.157  | 0.653    | 0.443  | 5.157          | 0.531   | 7,5 15              | -                  | 371-0254-1015 |
| - / 300     | 11.929  | 0.000    | 0.000  | 0.000          | 0.000   | -                   | 7,5 10 15          | 371-0300-1015 |
| 12 / 305    | 12.165  | 0.580    | 0.295  | 6.181          | 0.638   | 7,5 15              | -                  | 371-0305-1015 |

Positive and negative pressure ratings are the recommended maximum operating values. Products can be manufactured to meet higher operating values upon request. The bend radius is calculated from the center of the hose in an arched position. Additional information at [www.norres.com/us/technology/](http://www.norres.com/us/technology/). NORRES reserves the right to modify technical data at any time. Technical data based on tests at 68°F and are approx. values. Proper use and maintenance of NORRES hoses is the sole responsibility of purchaser and ultimate user of the product. The individual conditions, applications and the number of variables make firm recommendations technically impossible. This information is intended as a general guide only.

## Accessories



CONNECT 270-271



CLAMP 210 BRIDGE  
CLAMP



CONNECT 228



CONNECT 223



CLAMP 208