

TPE hose, light weight, fabric reinforced (up to +257°F)

Application

- flexible hose/ ducting for hot and cold gases
- granulate/ plastic dryer, hot air dryer
- film blowing machine, cooling air at the extrusion tool
- air supply: UV dryer, IR dryer
- textile industry, steam soaking: steam iron, industrial ironing machine, smoothing iron
- bus, utility vehicle, caravan/ trailer, mobile home/ camper/ RV, boat, ship/ vessel/ marine, yacht: ventilation, heating
- paper mill, paper and pulp industry: waste water, air extraction
- heating system/ heater: fresh air supply

- fabric reinforced
- light weight
- highly flexible + compressible
- very good heat resistance
- conforms to RoHS guideline
- good resistance to oil, gasoline, and chemicals
- good resistance to alkalis and acids
- REACH according to --> Technology / Technical Information / REACH

Temperature range

- 40°F to 230°F
- short time to 255°F

- PROTAPE® tape hose
- spring steel wire integrated in wall
- fabric-reinforced tape
- wall: EPDM/ PP coated fabric
- wall thickness 0.015 in approx.

Delivery variants

- further diameters and lengths available on request
- black (standard)
- special colors: full colored
- customer-specific branding

Properties

- fabric reinforced

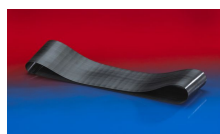
I.D.	outer Ø	Pressure	Vacuum	Bending radius	Weight	Dimensions in Stock	Order No.
(in / mm)	(in)	(psi)	(inHG)	(in)	(lb/ft)	(ft)	
2 / 50-51	2.165	3.844	6.378	1.299	0.141	7,5 15	321-0050-0000
3 / 75-76	3.150	2.611	3.455	1.929	0.208	7,5 15	321-0075-0000
4 / 100-102	4.252	1.886	2.126	2.559	0.417	7,5 15	321-0100-0000
5 / 125-127	5.236	1.595	1.477	3.189	0.524	7,5 15	321-0125-0000
6 / 150-152	6.220	1.305	1.477	3.858	0.625	7,5 15	321-0150-0000
8 / 200-203	8.189	0.943	0.974	4.724	0.833	7,5 15	321-0200-0000
- / 250	10.197	0.798	0.443	5.906	1.176	7,5 15	321-0250-0000
- / 300	12.165	0.653	0.325	7.087	1.411	7,5 15	321-0300-0000

Positive and negative pressure ratings are the recommended maximum operating values. Products can be manufactured to meet higher operating values upon request. The bend radius is calculated from the center of the hose in an arched position. Additional information at www.norres.com/us/technology/. NORRES reserves the right to modify technical data at any time. Technical data based on tests at 68°F and are approx. values. Proper use and maintenance of NORRES hoses is the sole responsibility of purchaser and ultimate user of the product. The individual conditions, applications and the number of variables make firm recommendations technically impossible. This information is intended as a general guide only.

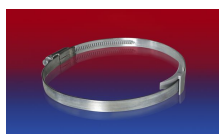
Accessories



CLAMP 213



CONNECT 228



CLAMP 210 BRIDGE CLAMP



CLAMP 217



CLAMP 212



CONNECT 223

Positive and negative pressure ratings are the recommended maximum operating values. Products can be manufactured to meet higher operating values upon request. The bend radius is calculated from the center of the hose in an arched position. Additional information at www.norres.com/us/technology/. NORRES reserves the right to modify technical data at any time. Technical data based on tests at 68°F and are approx. values. Proper use and maintenance of NORRES hoses is the sole responsibility of purchaser and ultimate user of the product. The individual conditions, applications and the number of variables make firm recommendations technically impossible. This information is intended as a general guide only.



CONNECT 270-271